



2019-2020

Annual Report



HEAD
START

A PROGRAM OF  HRDC

Program Overview

SERVING:

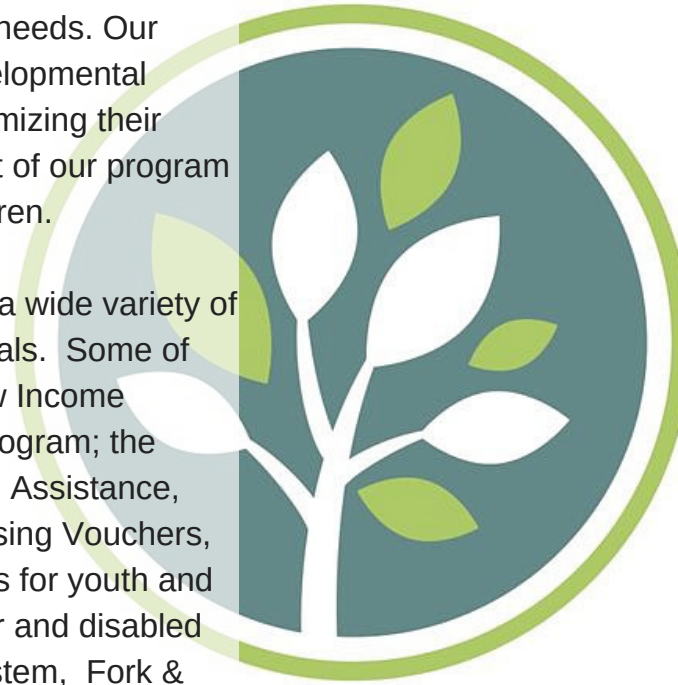
Belgrade

Bozeman

Livingston

Human Resource Development Council of District IX, Inc. (HRDC) began operating the Head Start Program in April of 1991. HRDC Head Start is funded to serve 152 children in Gallatin and Park Counties of Montana. Its focus is to provide for the healthy development of children and the strengthening of families through family involvement, community engagement and parent education. Head Start serves children with a wide range of development levels including children with special needs. Our program strives to bring a greater degree of social and developmental competence to the children of participating families by maximizing their unique strengths and abilities. Parents are an important part of our program and we support them as the primary educators of their children.

As a Community Action Agency, the HRDC brings together a wide variety of services and resources to help our families achieve their goals. Some of these services and resources include the following: the Low Income Energy Assistance Program (LIEAP); the Weatherization Program; the Energy Share Program; housing programs, including Rental Assistance, Emergency Housing Assistance, Transitional Housing, Housing Vouchers, and the Road to Home Homeownership Program; programs for youth and young parents; Galavan, a transportation program for senior and disabled individuals; Streamline, the no cost public transportation system, Fork & Spoon pay-what-you-can restaurant, and food insecurity assistance through the Gallatin Valley Food Bank. The availability of these resources in one location significantly increases the ability for Head Start staff to utilize these services to assist families in meeting their needs and family goals.



Mission

HRDC Head Start is a High Quality Program for Children & Families, forming a foundation for school readiness & lifelong learning.

Blending multi cultural and anti-biased education in an inclusive environment.

Fostering development of the whole child: self-identity, cognitive, language, literacy, physical, arts, emotional, wellness and social development.

Partnering and honoring the lives of children, their families and their communities



Letter from Our Director

At HRDC's Early Childhood Education program, we believe that every child deserves a head start. We strive to create an inclusive and supportive preschool that surrounds and supports a child's natural environments and play based learning. This year has brought so many challenges to our program, as the pandemic has for educators and families across the globe. As our program was forced to temporarily close our classrooms, our team continued our work in supporting the whole child and the whole family in their development and school readiness.

I was so inspired and impressed with the passion and professionalism with which our staff adjusted from in person learning to remote learning in a way that not only provided educational opportunities, but also celebrated our families' strength and resilience.

Our program has adapted and changed with the times we are living in. In addition to the provision of remote learning, we provided take home meals, information for parents and support for families to help them weather the economic impacts of the pandemic. We developed a robust Health and Safety protocol to mitigate the risk of spread of COVID-19 in our centers. This allowed us to provide a summer program to support students transitioning into kindergarten with several weeks of in person learning, providing the tools to ensure a successful start to lifelong learning.

Warmest Regards,

Sara Savage

Early Childhood Director/ HRDC Associate Director



Enrollment Snapshot

Families interested in the Head Start program must qualify by meeting locally designed requirements. Eligibility is based on family income at or below the Federal Poverty Guidelines (FPL). Children in foster care, homeless children, and children from families receiving public assistance (TANF or SSI) are eligible regardless of income. Our program may enroll up to 35% of our families who are between 100%-130% of FPL. Up to 10% of our enrollment may include families that are over 130% of FPL. During the 2019-2020 school year families qualified for our program in the following percentages:

**49%**

Income Eligible

**2%**

Public Assistance

**6%**

Foster Children

**14%**

Homeless Children

**27%**

Income between 100% and 130% of FPG

**2%**

Over 130% of FPG

172 Children

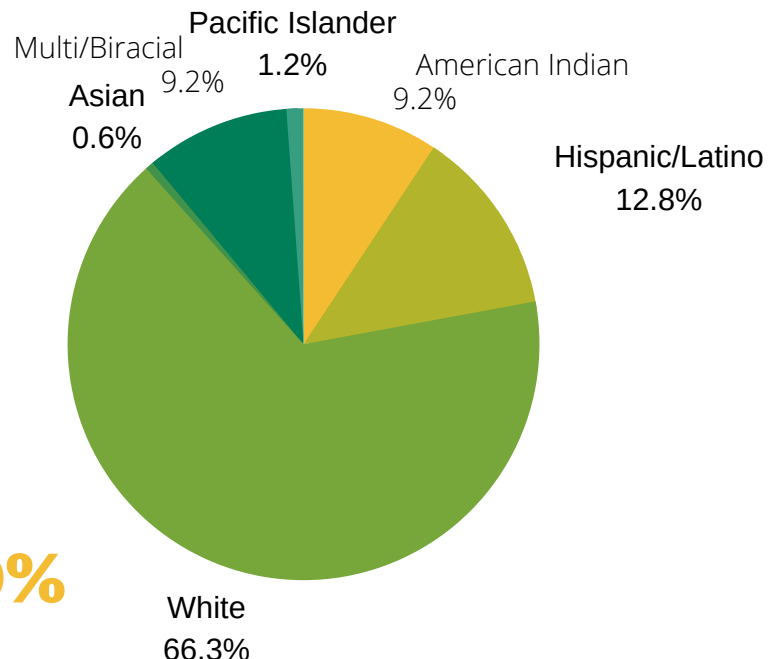
*This number exceeds funded enrollment due to turnover

162 Families

45% were single-parent families

91% of total families served were income eligible**32%** Percentage of eligible children served in our communities*Number of children we served divided by the number of 0-5 year olds in poverty in Gallatin & Park Counties. Data obtained from Montana Kids Count. <https://datacenter.kidscount.org/data/customreports/4279/any>

Racial Makeup

**151.6**Average monthly enrollment for 19-20
(99% of funded enrollment)Average daily attendance for 19-20 **86.9%**

Using the Teaching Strategies Gold (TS Gold) assessment tool, we assess and track the growth of students at three checkpoints throughout the school year. This year we were only able to provide two checkpoints. This helps our program determine the percentage of children meeting or exceeding Kindergarten readiness expectations over five domains. At our second check point of the 2019-2020 school year we saw the following results:

SCHOOL READINESS OUTCOMES:

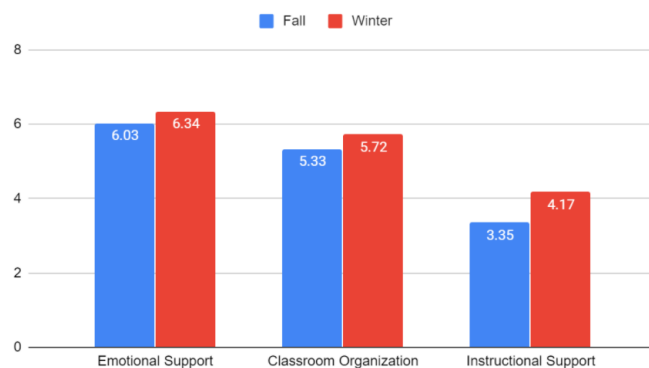
Social-Emotional	90%
Physical	95%
Language	92%
Cognitive	95%
Literacy	92%
Mathematics	90%

Education

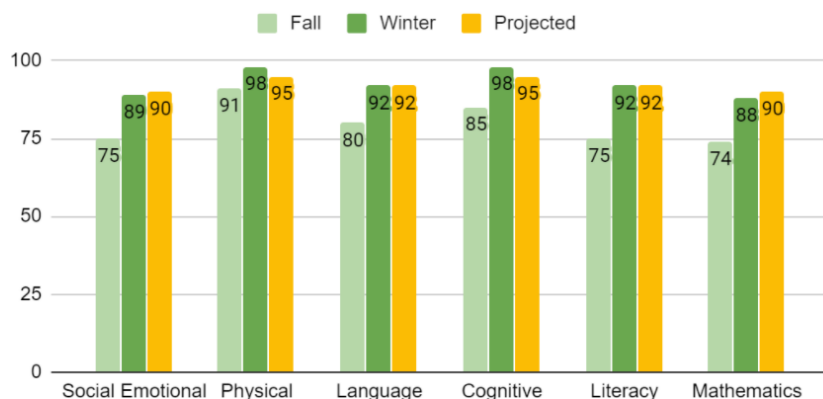
"HRDC Head Start served children in a classroom setting four days per week, both full day and half with classes. This year classes occurred from September through Mid March(COVID Closure)". Experience at Head Start fosters a strong love of learning, while our curriculum, **Creative Curriculum**, provides a comprehensive approach to development, by supporting children's individual development in language, literacy, cognitive, physical, science, social studies, math, and the arts. Our program encourages the theory that children learn through play and intentional, individualized teaching. This foundation supports children throughout their lives.

CLASS, or the **Classroom Assessment Scoring System**, is an observational measure that looks at interactions between teachers and students. These ratings are categorized into three areas: Emotional Support, Classroom Organization and Instructional Support. Each area is further broken down into different dimensions. Each dimension is ranked on a scale of one to seven, seven being the highest score given. Our 2019-2020 CLASS scores are shown in the graph below.

CLASS Observations



TS Gold Program Wide Data



TS Gold % meeting/exceeding expectations Program Wide

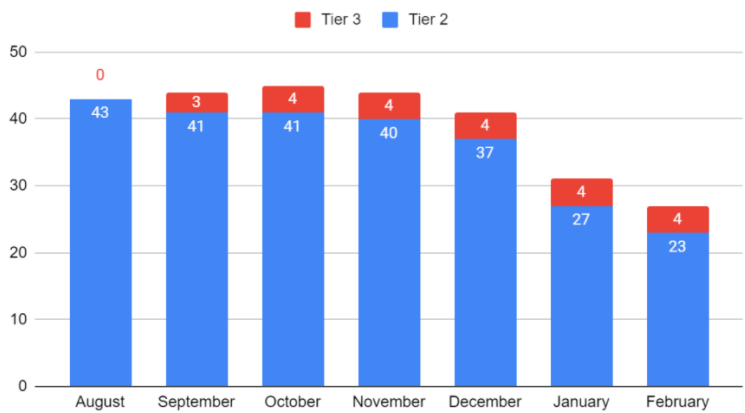


Social-Emotional Development

HRDC Head Start uses the Devereaux Early Childhood Assessment (DECA) and the Conscious Discipline Curriculum as a key part of the social-emotional, mental health process. With family and teacher data from these assessments we begin each year with a proactive approach to children's mental health and social emotional needs. Using a universal and individualized focus of support, children begin to recognize feelings, build trust, problem-solve, resolve conflicts, build resiliency, and develop independence and healthy attachments. If needed this data gives us the ability to reach out to community mental health resources for intensive care.

The graph shows the number of Social Emotional action plans from the DECA assessment and individualized action plans for children's social, emotional, and mental health need (Blue). As we progress through the year we may recognize a need for intensive intervention and the graph shows the number of children referred to a community professional mental health agency (Red).

Number of Social Emotional Action Plans



2019-2020 GOVERNING BOARD

Policy Council

Bailey Bliss
Chair

Stephanie Ford-Sanders
1st Vice Chair

Michaela Kaufman
2nd Vice Chair

Lauren Davis

Dr. Jane Gillette, DDS

Kayla Hefty

Brenda Kircher

Leanne Lovato

Rebecca Pilon

Robert Rustad

Billie Warford

Ashley Werle

Dr. Jennifer Wilkinson, MD

HRDC Board of Directors

David Kack
Board Chair

Gene Townsend
Vice Chair

Bill Berg

Bailey Bliss

mitch Bradley

Ron Brey

Scott Malloy

Pierre Martineau

Robert McMahan

Kris Moos

Brooke Poole

Peter Schmidt

Billie Warford

LeRoy Wilson

Linda Young



HRDC Head Start's goal is to promote family wellness through education, healthy choices and healthy lifestyles for our children and their families. Staff assist families with immunization requirements, health insurance questions, finding a medical home and encourage well child care. Dental and Physical exams are required for all children within 90 days of starting school. Our program has been fortunate to offer free oral health exams to all Head Start children. All enrolled children receive health screenings which include; Vision, Hearing, BMI, Height & Weight and Blood Lead.

7
children

had a health care plan for medication needs at school

26
children

had a modified diet due to food allergies

82%

of enrolled children received an annual Well Child Check

95%

of enrolled children received an annual dental exam



Nutrition

34,449 dietitian approved meals served

11,459

Breakfast

13,269

Lunch

9,721

Snack



Our program receives federal cash assistance to serve these healthy meals. Meals served at HRDC Early Childhood Education must meet nutrition requirements established by the USDA's Child and Adult Care Food Program (CACFP).

Family Services

At HRDC Head Start we believe that we are in a unique position to support and promote not only the child's early learning, but also the child's well-being and the well-being of parents and families. Parent, Family and Community Engagement is built upon developing trusting relationships with families that support family well-being, strong parent-child relationships and ongoing learning and development of parents and children alike.

Building these relationships begins with involving parents in their child's development and learning through positive parent-child interactions. We accomplish this through home visits and conferences and educational goal planning. Parent engagement promotes children's attainment of their academic goals through take home activities, parent involvement in their child's classroom, special day activities in the classroom such as Pancakes for Parents, interactions with our Family Support staff during parent orientation, goal planning and Family Partnership Agreements. The various family events we plan with the help of engaged community partners, help our families feel a part of the communities they live in.

162

Families served by Head Start

Needs met (clothing, food, housing, etc...) **58%**

Families housed **8**

Referrals to community agencies **114**



2019-2020

EVENTS

SEPTEMBER

- Open Houses
- Screenings (height, weight, vision, hearing, developmental)

JANUARY

- HCI "What to do When Your Child is Sick"
- *Joey Learns the Touching Rule parent education*

OCTOBER

- HCI Oral Health & Nutrition: "What to Do For Healthy Teeth"
- Policy Council Election

FEBRUARY

- Kindergarten Transition Panel

MAY

- Literacy Carnival *CANCELED due to COVID*

NOVEMBER

- Harvest Food Boxes
- Winter Hat Giveaway
- LIEAP (Energy Assistance) help
- Health Care Institute
- Circle of Security Parent training
- CPR/FA for Parents

MARCH

- Museum of the Rockies Family Fun Night
- Virtual Parent "Coffee Chats"

DECEMBER

- Holiday Food Boxes
- Salvation Army Holiday Assistance
- Mid year check in's

APRIL

- Pancakes for Parents literacy event (Virtual Event due to COVID)

JUNE

- Drive thru Graduation Ceremonies

COVID 19 Response

Our year was cut short due to the COVID 19 outbreak in our community. As mentioned previously, the last day of our 2019-2020 school year was March 12th. Our team quickly implemented "grab and go" meals for our families. Families were given lesson plans to work on at home. They were also offered at home teaching packets with activities and materials for the activities included. Families were presented with the opportunity to visit our Youtube Channel for Early learning videos created by our teachers. A Community Resource Guide was created and made available to all families and clients of HRDC along with an online "Request Support" help button for quick and efficient identification of client needs and how the agency may best respond.



Grab and Go Meals



HRDC EARLY CHILDHOOD EDUCATION

2,3702

Lunch

2,3702

Snack



Weekly Check in Calls from Family Support & Teachers

75%

COVID-19 Related New Needs Met

618

COVID 19 Related New Needs Identified

Summer Program

Our program conducted a four week summer program as safely as possible to help those children transitioning to kindergarten and children with high needs. Daily health checks, more frequent sanitization and mask wearing made our classes healthier and safer environments. Class sizes were limited to 10 students which helped for a more individualized program. Outdoor classrooms were intentionally set up for learning, playing, and meal times when weather permitted.



569

Lunch

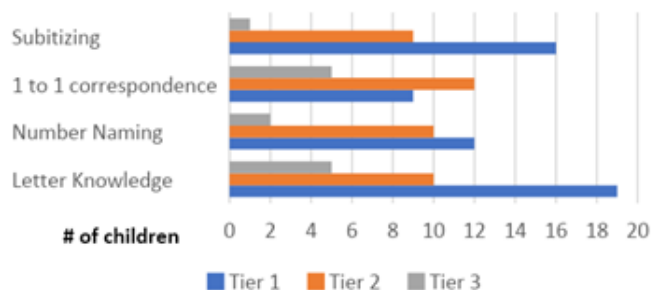
564

Snack

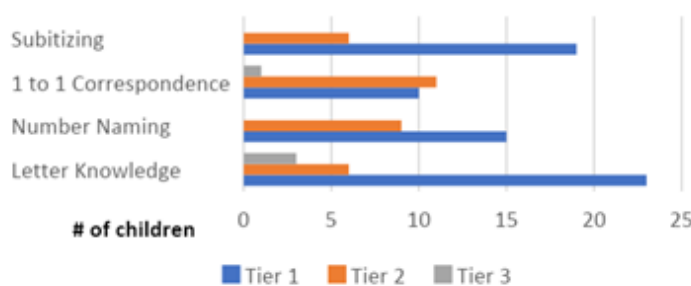
42

CHILDREN SERVED

Beginning of 4 week summer program



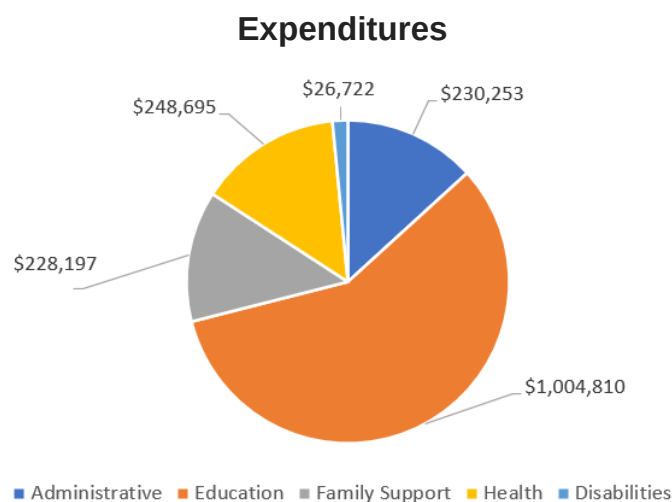
End of 4 week summer program



Financial Information

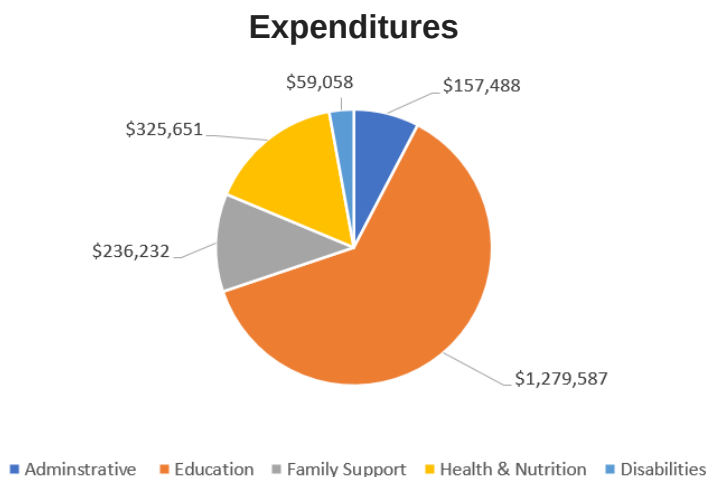
2019-2020

U.S. Department of Health and Human Services—Head Start Grant	\$	1,487,084
Supplement to Increase Program Hours	\$	84,854
Total Federal Head Start Grant	\$	1,571,938
United State Department of Agriculture Child & Adult Care Food Program	\$	108,492
STARS (Quality Rating and Improvement System)	\$	27,000
Donations	\$	25,465
Misc.	\$	5,783
Total Funding Sources	\$	1,738,678
Non-Federal Share Required	\$	392,985



Proposed 2020-2021 Budget

U.S. Department of Health and Human Services—Head Start Grant	\$	1,579,444
Cost of Living Adjustment & Quality Improvement Funding	\$	86,193
COVID One Time Funding	\$	133,579
Health & Safety One Time Funding	\$	89,419
Total Federal Head Start Grant	\$	1,888,635
United State Department of Agriculture Child & Adult Care Food Program	\$	113,020
STARS (Quality Rating and Improvement System)	\$	14,360
Best Beginnings Scholarships (CCDF)	\$	30,000
Donations	\$	12,000
Total	\$	2,058,015
Non-Federal Share Required	\$	394,861



Audit/Review Results

The most recent auditor's report showed no deficiencies, no matters of noncompliance, and no audit findings related to the financial statements of the HRDC. HRDC qualified as a low-risk auditee for years ended June 30, 2016, 2017 & 2018.

Head Start has passed all of its monitoring visits for the five year grant period and is in a non-competitive grant status.

Thank You

Community Partners



BOZEMAN HEALTH

MUSEUM OF
THE ROCKIES



CHILD CARE
CONNECTIONS

PARK COUNTY
COMMUNITY
FOUNDATION



Community
Health Partners



BELGRADE
COMMUNITY
LIBRARY



BRIDGER
ORTHOPEDIC

Belgrade

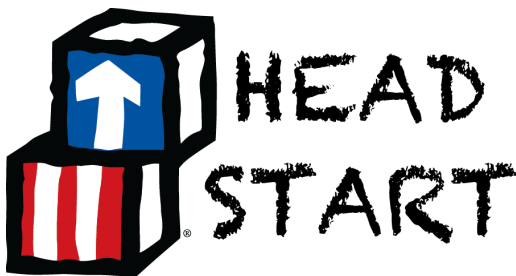
82 7th Street
Belgrade, MT 59714

Bozeman

52 N. 24th Ave
Bozeman, MT 59714

Livingston

201 South F
Livingston, MT 59047



A PROGRAM OF  HRDC

33 S. Tracy
Bozeman, MT 59718

406.586.9652

thehrdc.org/how-we-help/children/head-start-preschool/